

Customer :

customer

Customer part :

customer part

Comment :

Comment

S1=4.34

S2=5.18

Tmax=463

Tp S2=502.0

PI=0.46

HI=105

Sample =1695.60

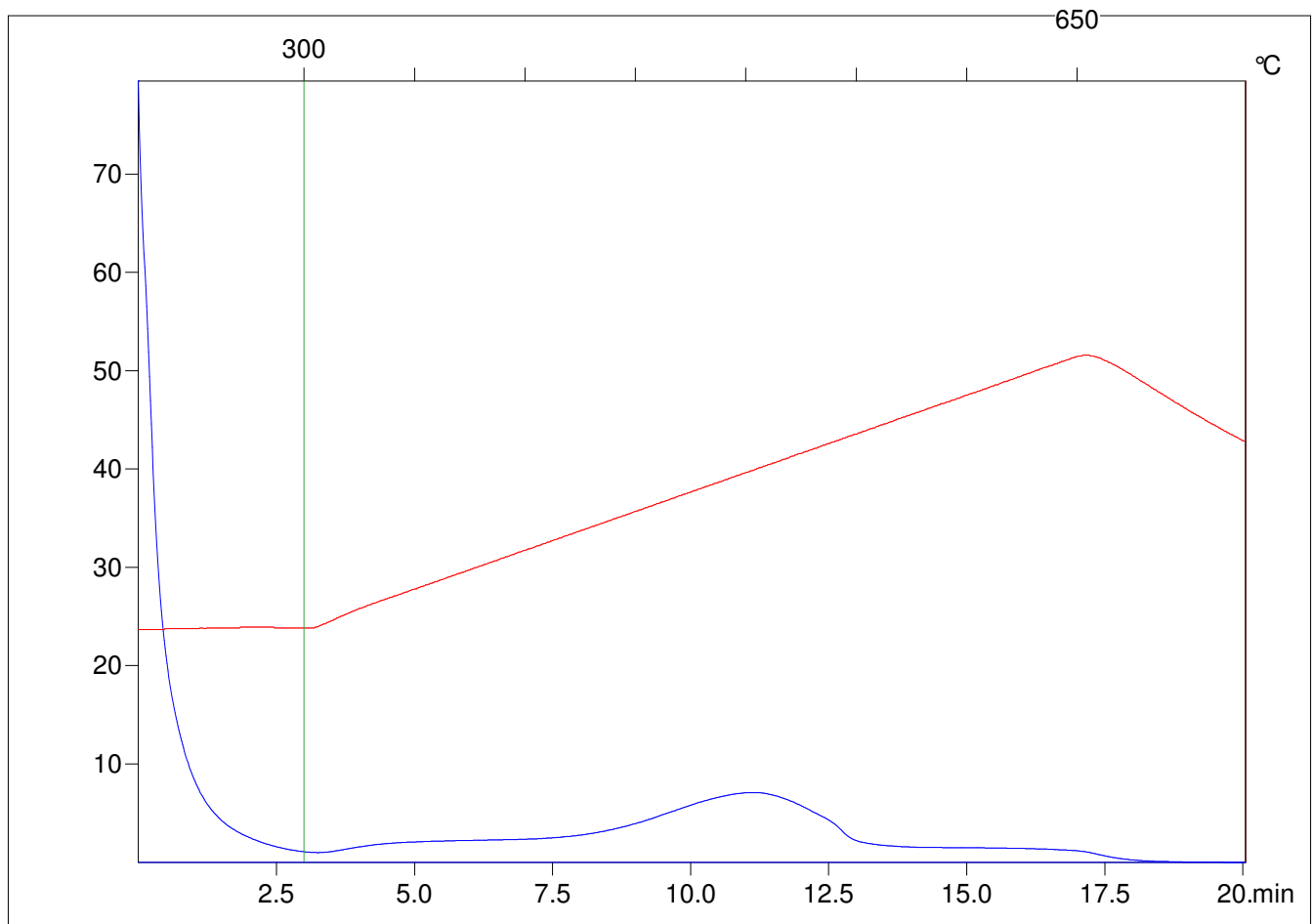
Method =Bulk Rock

Cycle=Basic

KFID(10\*9)=1444

Qty =70.7

TOC=4.94



C:\VINC\PK1\_1792\PK070.R00 : FID pyrolysis graphic

State

Pyro Status

Oxi Status